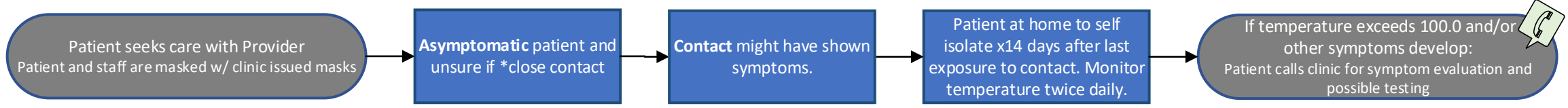
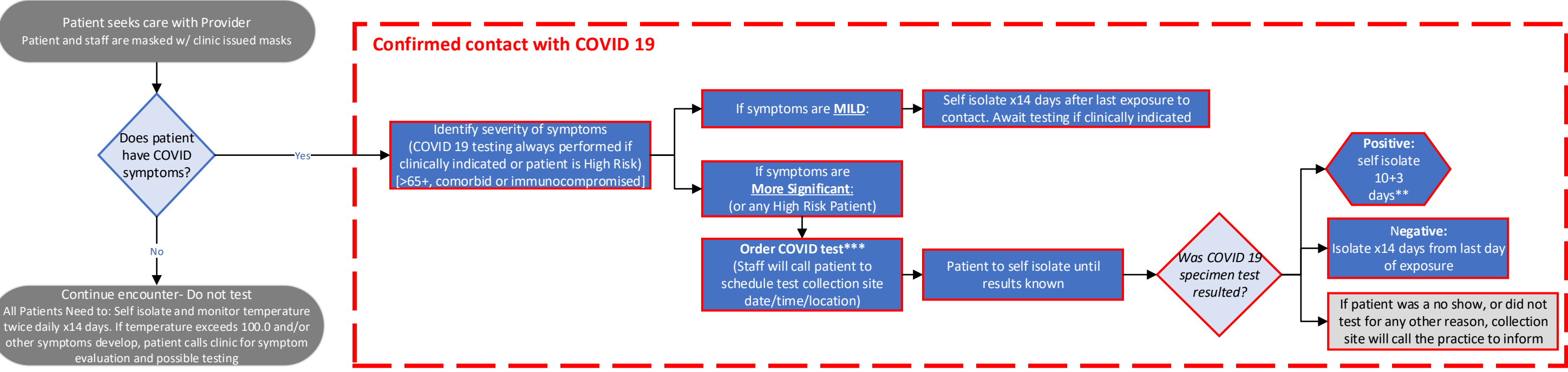


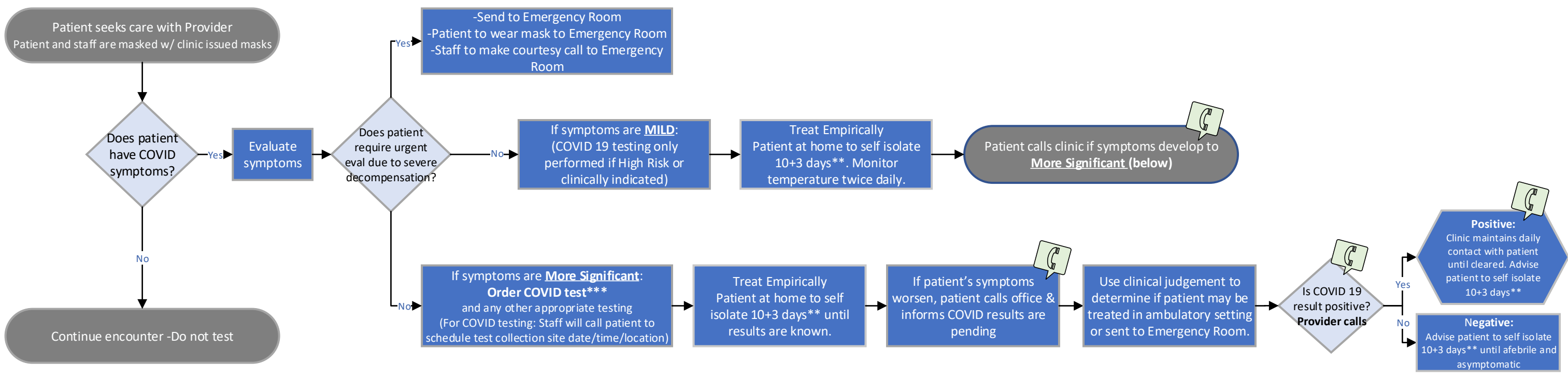
Unsure of *Close Contact

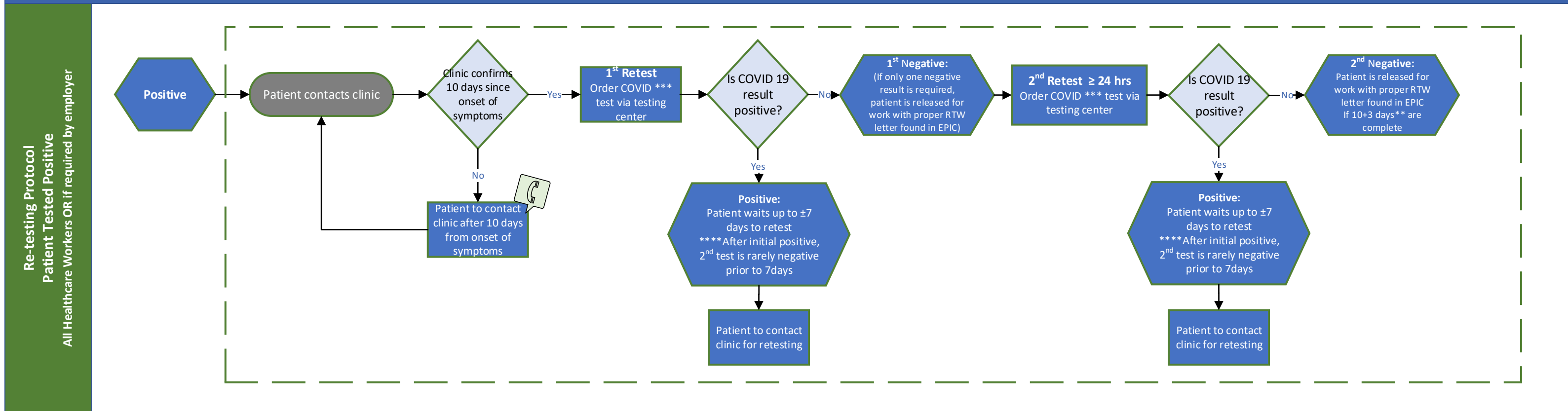


Confirmed *Close Contact



No Confirmed *Close Contact





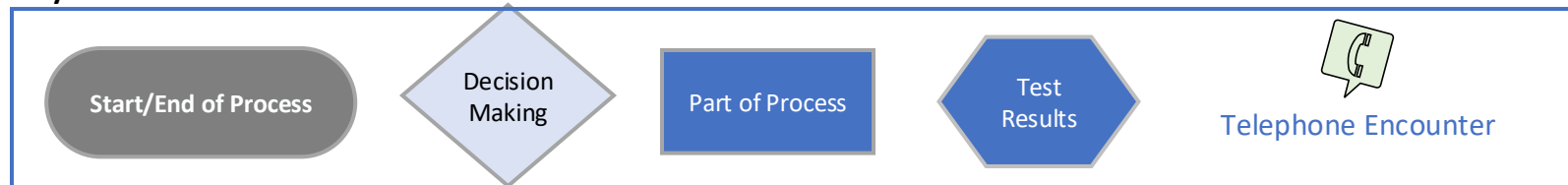
Reference Page

- **Symptomatic:** Symptoms include fever or chills, cough, shortness of breath or difficulty breathing, fatigue, muscle or body aches, headache, new loss of taste or smell, sore throat, congestion or runny nose, nausea or vomiting, and or diarrhea. Likelihood of COVID is increased if patient resides in or has traveled within the previous 14 days to a location with severe COVID 19 infections/ has had close contact with confirmed COVID 19 patient within last 14 days.
- **Defining Self-Isolation:** Stay home until [it is safe to be around others](#). If you live with others, stay in a specific “sick room” or area and away from other people or animals, including pets. Use a separate bathroom, if available.
- **Assumption:** All clinic staff and patients are masked as of 3.25.20. All clinic staff in an exam room must wear complete PPE for tests producing aerosolized droplets.
- ***Close contact:** Less than 6ft away & greater than 5mins in a healthcare setting, 15 minutes and less than 6ft away in a community setting
- ****10+3 day protocol:** Isolate for 10 days after symptoms began or 3 days after last symptoms, whichever is longer
- *****On Lab Order Note:** Specify if test is for healthcare worker or first responder
- ******Retesting Protocol:** If two negatives are requested from employer (e.g. healthcare worker): you may wait until 1st test is resulted prior to ordering 2nd test OR order both tests with note to schedule 2nd retest > 24hrs after 1st.

Note:

- When appropriate, patients may need to be seen in person that have been tested for COVID 19.
- As with all patients, Providers and staff should be wearing eye protection (face shield preferred), gown, and gloves.*If Providers or staff are high risk, wear N95 respirator. If aerosol generating procedure, wear N95 respirator. Disinfect surfaces as usual.

Key:



This workflow was designed specifically for Texas Health Physicians Group practices and we are sharing only for purposes of awareness and there is no guarantee this process would be appropriate for all settings.