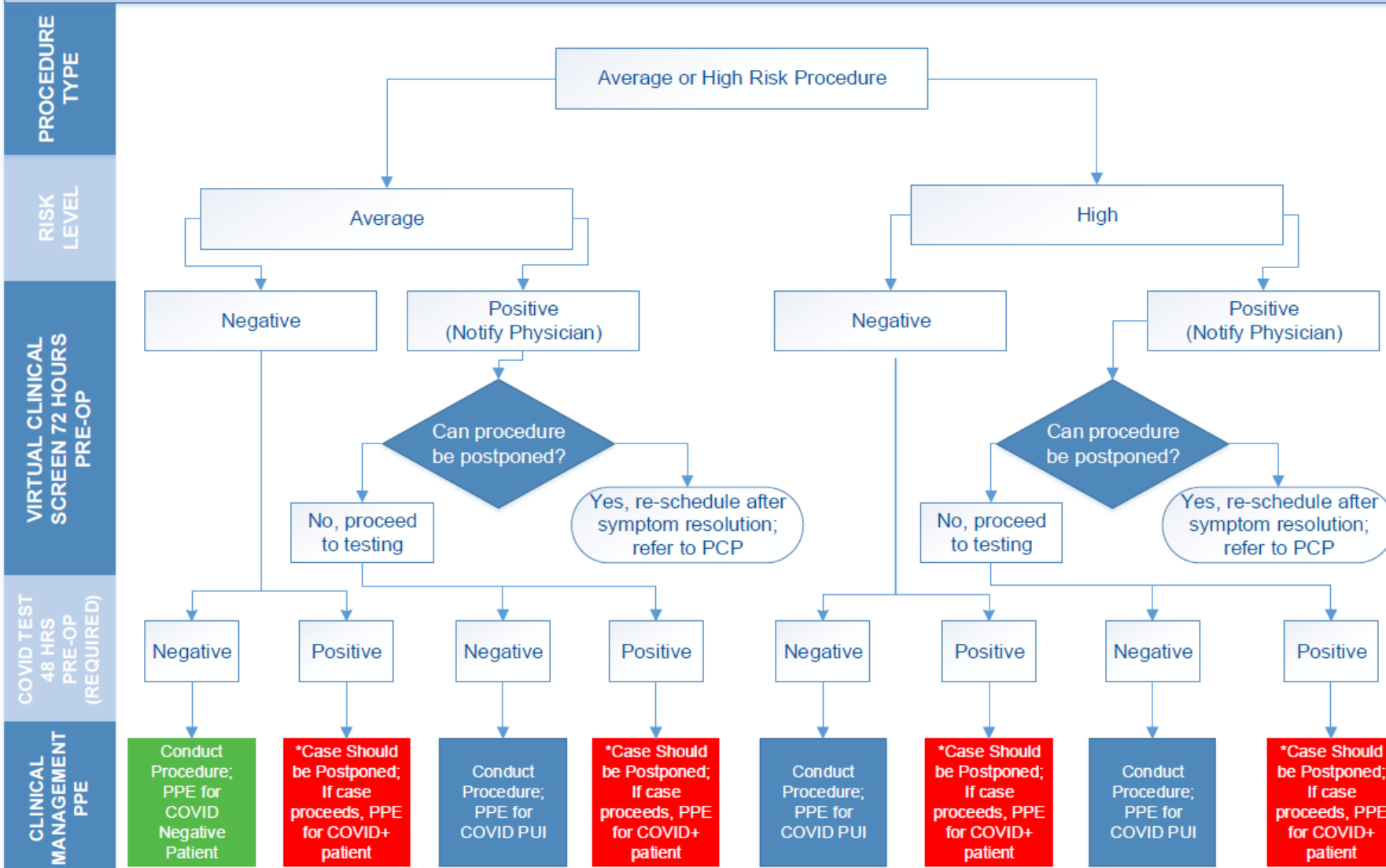


# Testing Algorithm

## COVID-19 Testing Protocol for Non-Urgent/Elective Procedures

(\*All procedures requiring mechanical ventilation must use a 21 minute air exchange room clearance following intubation and extubation)



**High risk procedures for aerosol generation include but are not limited to:**

- Thoracic surgery requiring lung resection
- Bronchoscopy
- Transesophageal echocardiography
- GI tract endoscopy
- Tracheal and subglottic airway
- ENT/OFMS procedures on glottis, oropharynx, nasopharynx, mastoid, or sinuses
- Surgery of the bowel with gross contamination

**Average risk procedures-all those not defined as high risk**

\*Proceeding with COVID+ elective case requires entity CMO approval. COVID+ patients should be given instructions for self-care and 14-day quarantine. Schedule for PAT after recovery.